

BEACON

Comments from the CEO



Charles Gibson
President/CEO
Amicalola EMC

Delivering safe, reliable and affordable power

Spring gives us a chance to thaw out after a chilly winter. Some take advantage of longer daylight hours by doing a little spring cleaning and yard work. But the seasonal shift isn't all good news. The rapid change from harsh, cold air to warmer temperatures can trigger severe weather. To protect our lines and keep

Be alert this spring. Don't plant trees or tall vegetation under power lines, and keep an eye out for power lines when working in your yard.

If severe spring weather blows through, a well-maintained ROW leads to fewer outages and faster response time. When trees *do* fall, crews are able to restore service more quickly than they could with poorly maintained areas.

As a not-for-profit cooperative, Amicalola EMC strives to keep costs affordable for you, our members. Maintaining our ROW is an important part of controlling costs. When crews work in well-maintained areas, we can reduce risks for employees and equipment, too—another way to keep costs low.

power flowing safely to your home, we must be diligent in maintaining our rights-of-way. Think of it as spring cleaning for power lines.

Right-of-way (ROW) maintenance keeps tree limbs and other obstacles away from high-voltage power lines. It's an important part of the service we provide you, our members, for three reasons: safety, reliability and cost.

Our primary concern is the safety of our workers and members. Properly maintained ROW keeps our crews safe when they are restoring service and maintaining our system.

Power lines are a constant part of our landscape; it's easy to forget they are around. We work hard to keep the area around our lines clear, but we need your help. Be alert this spring. Don't plant trees or tall vegetation under power lines, and keep an eye out for power lines when working in your yard.




**STAND WITH US
AS WE FIGHT
TO KEEP
ELECTRIC BILLS
AFFORDABLE.**

ACTION.COOP

IN THIS ISSUE:

CEO message	26A
Capital credits	26B
Save energy and money	26C
Gilmer Arts Association	26D

Are we holding your money?



Local electric cooperatives operate at cost; any excess revenues are returned to member-owners in the form of capital credit refunds.

To find out if you have an unclaimed refund, visit www.amicalolaemc.com. Choose the **Capital Credits** tab on the home page, and then click on the **Unclaimed Recipients** link. You may also call 706-253-5200 or visit any Amicalola EMC office.

After a mandatory five-year waiting period, any unclaimed capital credit refunds are distributed in accordance with Georgia's unclaimed property laws, O.C.G.A. §44-12-236.

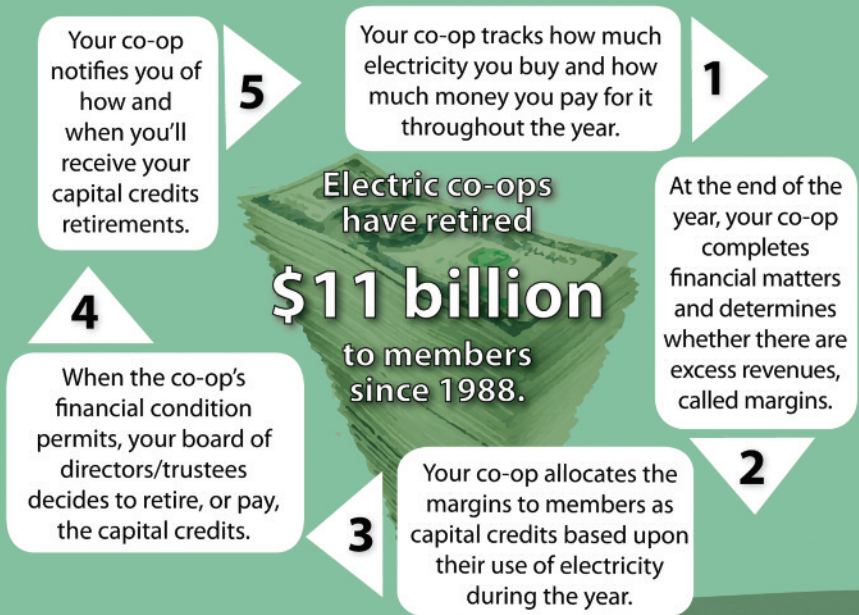
Statement of Nondiscrimination

Amicalola Electric Membership Corporation is the recipient of federal financial assistance from the Rural Utility Service, an agency of the U.S. Department of Agriculture, and is subject to the provisions of Title VI of the Civil Rights Act of 1964, as amended; Section 504 of the Rehabilitation Act of 1973, as amended; the Age Discrimination Act of 1975, as amended; and the rules and regulations of the U.S. Department of Agriculture, which provide that no person in the United States on basis of race, color, national origin, age or handicap shall be excluded from participation in, admission or access to, denied the benefits of, or otherwise be subjected to discrimination under any of this organization's programs or activities.

The person responsible for coordinating this organization's nondiscrimination compliance efforts is Patricia B. Evans, Executive Assistant to the President/CEO. Any individual, or specific class of individuals, who feels that this organization has subjected them to discrimination may obtain further information about the statutes and regulations listed above, and/or may file a written complaint with this organization; or the Secretary, U.S. Department of Agriculture, Washington D.C. 20250; or the Administrator, Rural Utility Service, Washington, D.C. 20250. Complaints must be filed within 180 days after the alleged discrimination. Confidentiality will be maintained to the extent possible.

How do capital credits work?

Because electric co-ops operate at cost, any excess revenues, called margins, are returned to members in the form of capital credits.



Source: National Rural Utilities Cooperative Finance Corporation

We want to help you save energy and money



www.amicalolaemc.com

Owned by those we serve, we are committed to helping our members find ways to save energy and money. Visit the **HomeEnergySuite** on our website to choose from 10 different free energy-saving tools, including the **HomeEnergyCalculator** to pinpoint your opportunities for savings.



Energy Resource Conservation (ERC) Loan Program

Is an outdated heating and air system using too much energy? Amicalola EMC offers the ERC Loan Program to approved members to finance weatherization projects, heat pumps or approved electric heating and air systems. Loans are not available for gas furnaces. The program offers up to \$7,000 to approved members. The current interest rate is 5 percent, with a maximum of 84 months to repay.

Home Energy Audits

Schedule a free home energy audit. Our energy advisor will visit your location, review your energy use and provide you with tips and advice to bring your electric use down.

To take advantage of these opportunities, or for more information please contact Member Services at memberservice@amicalolaemc.com, or call 706-253-5200 or your local Amicalola EMC office.



Energy Efficiency

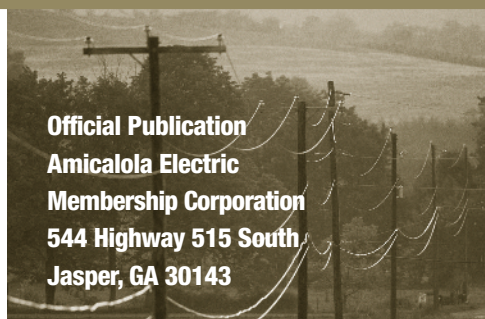
Tip of the Month

Programmable thermostats can save up to \$160 a year in energy costs. Match thermostat settings to your schedule: cold when you're away and warm when you're at home. In winter, set the thermostat to 68 degrees during the day (lower at night when you're snug in bed). By turning your thermostat down 10 to 15 degrees for at least eight hours, you can shave 5 to 15 percent from your heating costs.

Source: TogetherWeSave.com, U.S. Department of Energy



Heat pump thermostats should be set at the lowest comfortable temperature (such as 69 degrees) and left.



Official Publication
Amicalola Electric
Membership Corporation
544 Highway 515 South
Jasper, GA 30143

Charles L. Gibson, *President*

Board of Directors

- Charles R. Fendley, *Chairman*Post #3
John H. Bennett, Jr., *Vice Chairman* ...Post #6
Randall Ponder, *Sec.-Treas.*Post #1
James H. BryanPost #4
Kathy BurtPost #7
Travis D. ClinePost #5
Wm. Leon DavisPost #9
David J. PiercePost #2
Reggie StowersPost #8

TELEPHONE NUMBERS TO CALL IN CASE OF POWER INTERRUPTIONS:

Outage Hotlines

706-253-0359
706-276-0359
706-864-0359

Amicalola Electric Membership Corporation

544 Hwy. 515 South
Jasper, GA 30143
Telephone: 706-253-5200

www.amicalolaemc.com

Eastern District Office

1234 Dawsonville Hwy.
Dahlonega, GA 30533
706-864-7979

Northern District Office

150 Tabor Street
Ellijay, GA 30540
706-276-2362

Office Hours: Monday through Friday
8:00 a.m. - 5:00 p.m.
Closed on Saturday, Sunday, and holidays

Beacon Editor:

Stacey Godfrey Fields, CCC



Keeping the arts alive in Gilmer County for more than 30 years

The Gilmer Arts Association has events, programs and classes for students, seniors and the entire community.

The B.E.S.T. (Bringing Ellijay Sensational Talent) Series brings great, professional talent to the area. The Community Theatre program and Community Chorus showcase local talent and there are plans to bring the heritage of Gilmer County to life, with downtown walking tours and in-character storytelling about days gone by. The gift shop offers original art work by local artisans, including pottery, woodturnings, oils, watercolors, graphic art, photography, sculpture and more.

"I'm so thankful for the membership support and sponsor contributions that enable us to present these programs and events. We have a great staff, board of directors and volunteers who work so many hours to bring the arts alive to our residents," explains John Rathbone, President of the Gilmer Arts Association.

Visit www.gilmerarts.org for more information about becoming a member or upcoming events or classes.



Gilmer Arts & Heritage Association/207 Dalton Street/
Ellijay, GA 30540/706-635-5605

What is a co-op?

Cooperative Principle #3

Members' Economic Participation—Members contribute equitably to, and democratically control, the capital of their cooperative. At least part of that capital is usually the common property of the cooperative.

Cooperative Principle #4

Autonomy and Independence—Cooperatives are autonomous, self-help organizations controlled by their members. If they enter into agreements with other organizations, including governments, or raise capital from external sources, they do so on terms that ensure democratic control by their members and maintain their cooperative autonomy.

Cooperative Principle #5

Education, Training and Information—Cooperatives provide education and training for their members, elected representatives, managers and employees so they can contribute effectively to the development of their cooperatives. They inform the general public, particularly young people and opinion leaders, about the nature and benefits of cooperation.